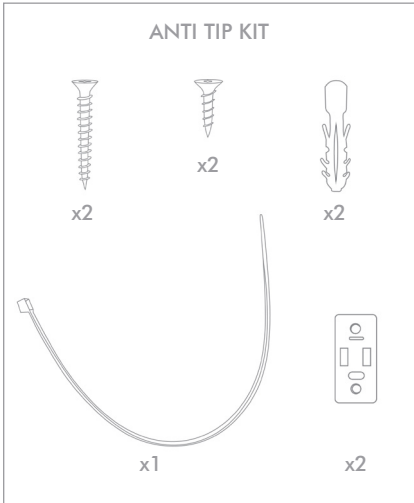
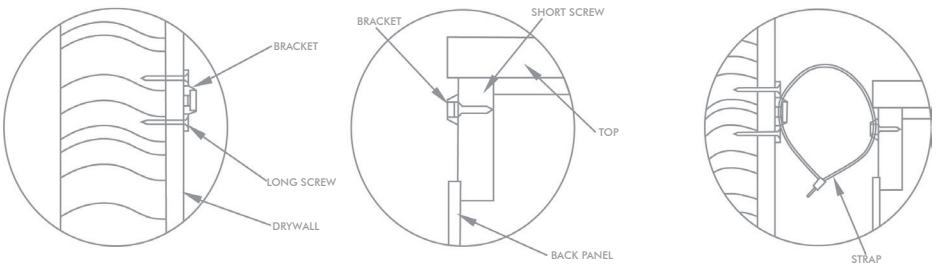


# OLIVER BONAS

## IRO CHEST OF DRAWERS



### ANTI TIP KIT



1. Mark the location of the hole on the wall using bracket approx 1" below the top of furniture. Pre-drill the holes at marked location & insert wall plug. Align bracket onto wall plug & secure using long screws.

2. Move the furniture to its final position against the wall and mark the location of the wall bracket on the back of the furniture. The bracket that attaches to the furniture must go into the solid wood piece at the top, not into the thinner back panel. Move the furniture away from the wall and place a bracket on the mark. Mark and drill holes for the screws using a 3/32 drill bit. Attach the bracket to the furniture using the short screws.

3. Move the furniture to its final position and align the bracket on the furniture with the bracket on the wall. Thread the strap through the bracket as shown, and tighten until snug. Do not over-tighten.

### IMPORTANT

Check that the wall bracket is firmly screwed into the stud, the furniture bracket is firmly attached to the frame, and the strap is snug.

# OLIVER BONAS

## Furniture Care Information

### MAHOGANY INDONESIA WOOD WITH BRASS HARDWARE AND COLOURED TASSELS

Each piece has been individually handcrafted to create a unique piece of furniture.

#### PROPERTIES OF MAHOGANY

Indonesia Mahogany wood is certified as being sustainably sourced

Mahogany is a hardwood timber and coarse in texture. Its reddish- brown colour darkens over time. Iro is lovingly hand painted and variations will occur which is part of the unique design and finish.



#### CARING FOR YOUR WOODEN FURNITURE

During warm, humid weather wood can expand. During dry weather wood contracts. These seasonal variations are a normal characteristic of wood.

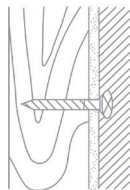
Do not position in front of radiators, avoid direct heat, direct sunlight, moist environments and not for outdoor use.

To help maintain the beauty and performance of your piece of furniture do not use abrasive cleaners. Wipe with a damp cloth, followed by a dry cloth. Any spills should be removed immediately. Never let them dry out on the surface

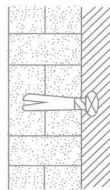
Take care when moving the furniture.

Do not drag furniture as it may cause damage to the joints.  
Check fittings regularly as they may become loose over time.  
Not suitable for children's room.

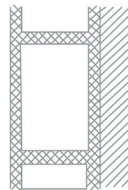
#### ANTI TIP KIT



WOOD



BRICK



CAVITY  
(Special fittings needed)

Please retain this information for future reference