

# OLIVER BONAS

## LOHKO

We hope you love your purchase, however if you aren't completely happy please retain your packaging to ensure its safe return.



This beautiful piece of bone inlay craftsmanship is formed from pieces of buffalo bone that are hand-carved by our master craftsmen in Rajasthan. The bone we use in this furniture is a by-product of the meat industry and the bone we use in all our pieces will never be obtained from exotic, wild-caught or endangered animals.

Variation may occur

### MANGO WOOD

Mango wood is a hardwood timber. Mango wood is coarse in texture and its colour varies may occur adding charm to each piece.

### CARING FOR YOUR FURNITURE

To help maintain the natural beauty and performance of your piece of furniture do not position in front of radiators, avoid direct heat, direct sunlight, moist environments and outdoor use.

Any spills should be removed immediately. Never let them dry out on the surface.

Take care when moving the furniture. Do not drag furniture as it may cause damage to the joints.

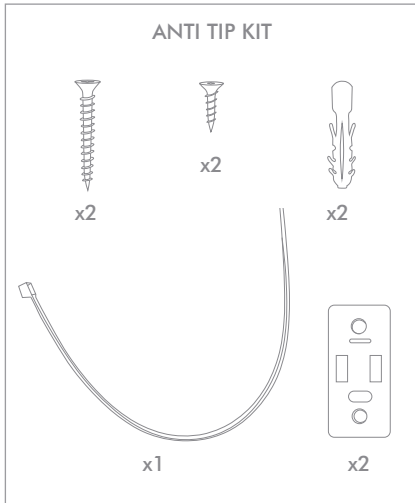
Wipe with a damp cloth followed by a soft dry cloth. Do NOT use abrasive cleaners or furniture polish on the bone or brass handles as this may cause discolouration.

Design for domestic use only.

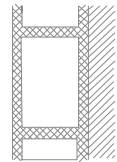
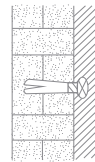
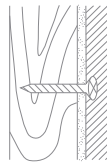
Please retain this information for future reference

# OLIVER BONAS

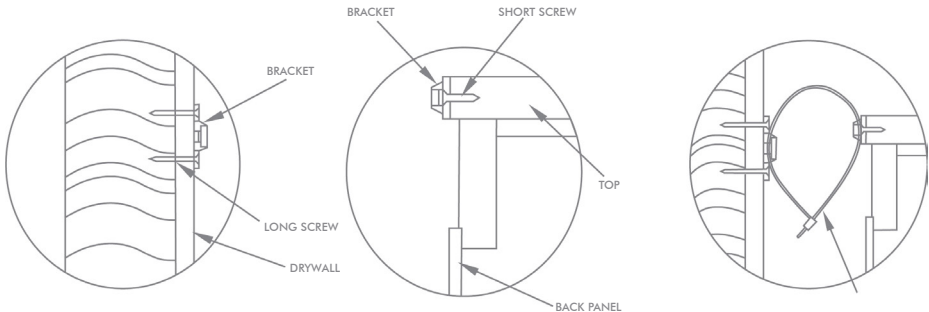
## ANTI TIP KIT



For in children's rooms please use the anti tip kit provided for safety. Please ensure the correct fittings are used for the chosen wall substrate:



### ASSEMBLY



1. Mark the location of the hole on the wall using bracket approx 1" below the top of furniture. Pre-drill the holes at marked location & insert wall plug. Align bracket onto wall plug & secure using long screws.

2. Move the furniture to its final position against the wall and mark the location of the wall bracket on the back of the furniture. The bracket that attaches to the furniture must go into the solid wood piece at the top, not into the thinner back panel. Move the furniture away from the wall and place a bracket on the mark. Mark and drill holes for the screws using a 3/32 drill bit. Attach the bracket to the furniture using the short screws.

3. Move the furniture to its final position and align the bracket on the furniture with the bracket on the wall. Thread the strap through the bracket as shown, and tighten until snug. Do not over-tighten.

### IMPORTANT

Check that the wall bracket is firmly screwed into the stud, the furniture bracket is firmly attached to the frame, and the strap is snug.