

# OLIVER BONAS

## NEW BOYS FURNITURE CARE INSTRUCTION

### MANGO WOOD with RATTAN WOVEN PANELS

Each piece has been individually handcrafted to create a unique piece of furniture.

### PROPERTIES OF MANGO WOOD

Mango wood is a hardwood timber. Mango wood is coarse in texture and its colour varies from light to dark brown. Natural variation may occur adding charm to each piece.

### CARING FOR YOUR WOODEN FURNITURE

Wood is a natural material.

During warm, humid weather wood can expand. During dry weather wood contracts. These seasonal variations are a normal characteristic of wood.

To help maintain the natural beauty and performance of your piece of furniture do not position in front of radiators, avoid direct heat, direct sunlight, moist environments and outdoor use.

If drawer or doors do expand please try the following to resolve:

Using a fine to medium coarse sand paper, light sand the affected edges.

Applying a little candle wax/furniture wax, they will help your drawer run smoothly again.

### WARNING!

Be careful when applying any wax to natural unfinished wood as staining may occur.

Any spills should be removed immediately. Never let them dry out on the surface.

For stubborn stains, gently sand the full surface area to help maintain an even and smooth finish.

To maintain the appearance of your wooden furniture, we suggest regular dusting with a soft cloth.

Take care when moving the furniture.

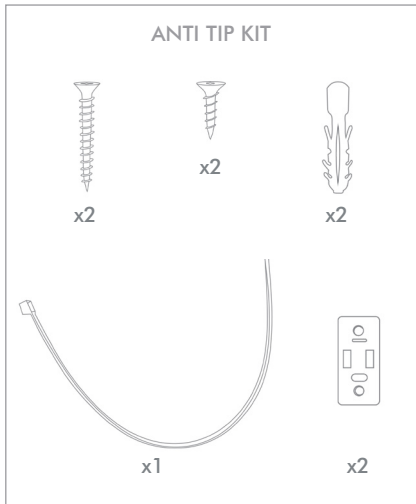
Do not drag furniture as it may cause damage to the joints.

Please note, the above are guidelines only.

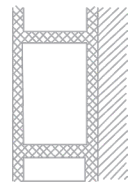
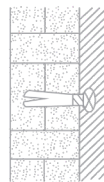
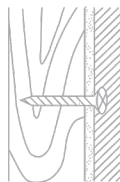
Please retain this information for future reference.

# OLIVER BONAS

## NEW BOYS FURNITURE CARE INSTRUCTION

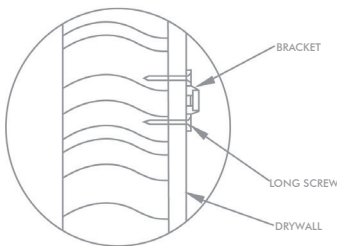


For in children's rooms please use the anti tip kit provided for safety. Please ensure the correct fittings are used for the chosen wall substrate:

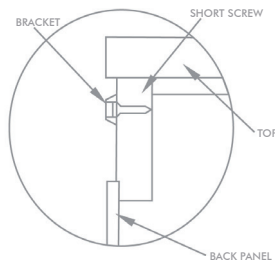


(Special fittings needed)

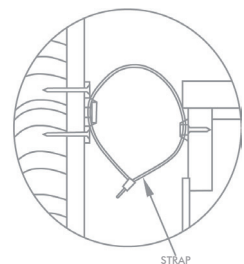
### ASSEMBLY



1. Mark the location of the hole on the wall using bracket approx 1" below the top of furniture. Predrill the holes at marked location & insert wall plug. Align bracket onto wall plug & secure using long screws.



2. Move the furniture to its final position against the wall and mark the location of the wall bracket on the back of the furniture. The bracket that attaches to the furniture must go into the solid wood piece at the top, not into the thinner back panel. Move the furniture away from the wall and place a bracket on the mark. Mark and drill holes for the screws using a 3/32 drill bit. Attach the bracket to the furniture using the short screws.



3. Move the furniture to its final position and align the bracket on the furniture with the bracket on the wall. Thread the strap through the bracket as shown, and tighten until snug. Do not over-tighten.

### IMPORTANT

Check that the wall bracket is firmly screwed into the stud, the furniture bracket is firmly attached to the frame, and the strap is snug.