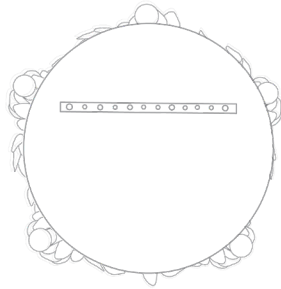


# OLIVER BONAS

## FLORAL MIRROR

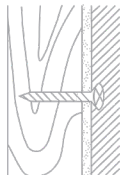


Wall Fixings are not provided.  
E14 / SES 5W LED bulbs not provided.

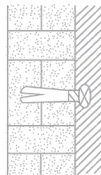
If the electrical cord is damaged, please do not use.

Wall fixing must be selected according to the type of wall and the weight of item to be hung. We recommend seeking professional advice before selecting fixings.

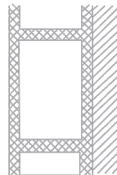
Check the mirror periodically to ensure fittings are secure.



Wood



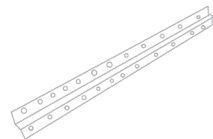
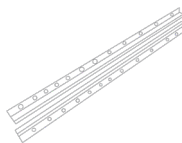
Brick



Cavity  
(Special fittings needed)



Ensure the bar is level by checking the built in spirit level. The bubble needs to be in the middle



The recommended minimum number of screws to secure the included bar to the wall is 3, evenly spaced. The mirror then needs to be lifted onto the bar, it is critical the mirror is level.

# OLIVER BONAS

## Mirror Care Information

### WALL MOUNTED LIGHT

Lovingly hand finished, variations in the finish will occur

Rated Voltage: 220-240V~, 50HZ  
Bulb E14 / SES 5W LED Bulb

### CLEANING INSTRUCTIONS

Wipe a damp cloth, followed by a soft dry cloth  
Do NOT use abrasive cleaners that can mark the surface

### WARNINGS

Not suitable for bathroom or outdoor use. Not suitable for children's rooms.

If the supply cord is damaged, please return to Oliver Bonas.

To change bulb, switch off at the mains

Allow bulb to cool before changing.

Carefully remove bulb

Ensure the correct bulb is used. Do not exceed the maximum wattage

Please retain this information for future reference.